



FIELD SERVICE



We Offer:

- Manufacturer's Warranty Repair
- Factory Startup
- Testing
- Commissioning
- Retro-Commissioning



TRIDIUM CERTIFIED TECHNICIANS

We offer:

- Design
- Installation
- Programming
- Warranty Services
- Remote Monitoring

BUILDING AUTOMATION



Honeywell

With WEBs-8000, WEBs-N4 and WEBs-AX, Honeywell has the Niagara Framework-based building management solution (BMS) that takes all aspects of your building and occupant needs into consideration to maximize energy efficiency and make management of your facility simpler and more user-friendly. Add the power of Spyder® or Stryker controllers, and you'll have the versatility to choose from a collection of best-in-class control products ready to evolve and meet all of your HVAC, lighting and security needs.



WEB-8000 Controller

Best in class features for streamline building management



WEBs-N4 Software Platform

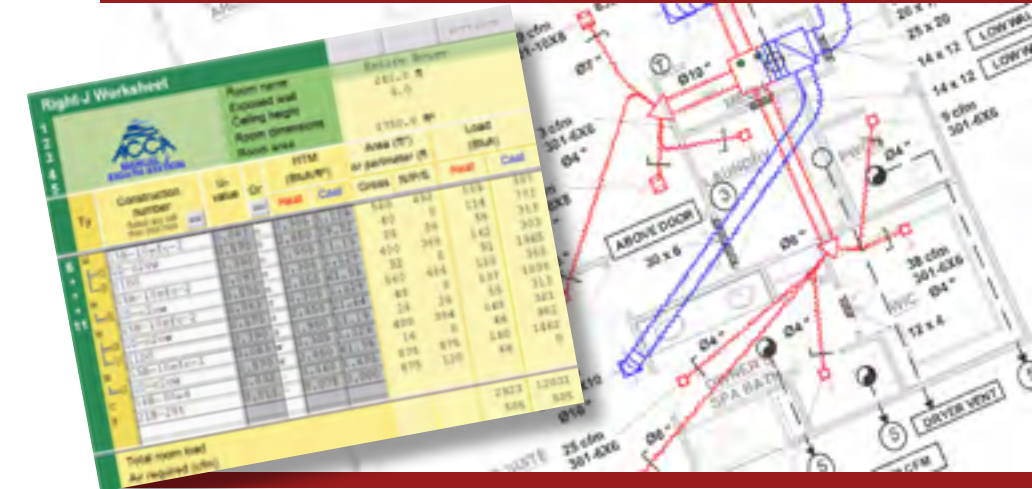
Advanced Visualization & Navigation



WEBs-AX Automation Controllers

One control system for simplified building management and monitoring

LOAD CALCULATION & ENERGY MODELING



WRIGHTSOFT® IS A REVOLUTIONARY ALL-IN-ONE TECHNOLOGY.

Elite Software is the world's premier software developer for HVAC, electrical, plumbing, and fire protection design software. Over 30 programs are offered for such applications as HVAC load calculations, building energy analysis, HVAC duct and pipe sizing, plumbing & lighting design, fault current calculations, voltage drops, fuse and breaker coordination, and much more. Our HVAC software sets the standard for excellence and ease-of-use in the industry.

We Offer:

- Site Survey
- HVAC Usage Modeling
- HVAC Load Calculation
- Payback Analysis
- Utility Rebate Applications
- Data Acquisition & Logging

Aircon Engineering, Inc. • 7 Williams Street • Cumberland, MD 21502 • P: 800-638-6270 • F: 301-722-2262
 www.airconeng.com • 2001 Pleasant Valley Blvd. • Altoona, PA 16601 • P: 814-201-2778 • F: 814-201-2780



MECHANICAL EQUIPMENT

Services for air handling units and coils; rooftop units; condensing units and condensers; VRE; ductless; terminal units; cooling towers; variable frequency drives; boilers, furnaces and infrared heaters; fans, pumps and motors' and other general mechanical equipment.

SERVICE COMPLETE

BASIC

PREMIUM

DESCRIPTION	BASIC	PREMIUM
Inspection and maintenance program designed to identify issues preventing covered equipment from running efficiently.	Inspection, maintenance and repair program for customers who want budget predictability and protection from unplanned failures of covered equipment.	Inspection, maintenance and repair program for customers who want budget predictability and protection from unplanned failures of covered equipment.
Recommended Number of Visits	2 annual visits (1 operational 1 comprehensive)	4 annual visits (3 operational 1 comprehensive)
Scheduled Operational Inspections	✓	✓
Scheduled Comprehensive Maintenance	✓	✓
Scheduled Service Parts	✓	✓
Prioritized Unscheduled Service	✓	✓
Unscheduled Repair Parts		✓
Unscheduled Repair Labor		✓
24/5 or 24/7 Extended Service Hours		Optional
After Hours Emergency Call Center	✓	✓
Industry-Leading Safety Program	✓	✓
Factory-Trained Technicians	✓	✓
Dedicated Customer Service Representatives	✓	✓
	Custom Options Tailored to Facility Needs	Custom Options Tailored to Facility Needs

www.airconeng.com



7 Williams Street
Cumberland, MD 21502
P: 800-638-6270
F: 301-722-2262

2001 Pleasant Valley Blvd.
Altoona, PA 16601
P: 814-201-2778
F: 814-201-2780

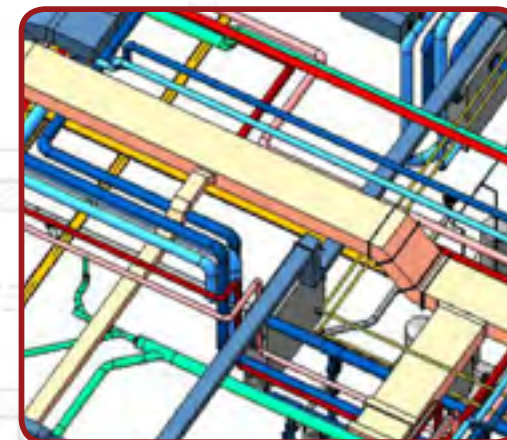
AIRCON ENGINEERING INC.

Quality Products and Superior Service



- Do you need shop drawings?
- Do you have old blue prints or no blue prints at all?
- Interested in saving time and money?

AIRCON ENGINEERING INC. HAS BLUE PRINT AND DRAFTING SERVICES



We Offer:

- Paper to CAD Conversions
- 3D Coordination drawings for all trades
- Shop Drawings
- Architectural CAD
- 3D Modeling and Coordination

www.airconeng.com